



aruba

a Hewlett Packard
Enterprise company

HPE Aruba IRIS User Guidebook for Partners

Last updated in 2018 Mar

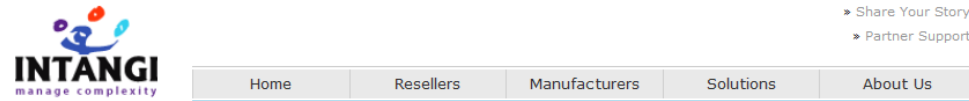
유진경 차장 jinkyung.yu@hpe.com
Product Category Manager
HPE Aruba Korea

IRIS 특징과 이점

- Iris can help users configure individual boxes, but its power and capabilities shine when designing solutions with multiple sites and interconnected products from many vendors
- Provides multiple design views (topology, block, port connection, and rack)
- Connection validation ensures correct connectivity with automatic cable selection. Optical cables, DAC cables, CWDM, DWDM, RPS/EPS power jumper cables, etc. are all supported for HPN
- Unlimited undo/redo functionality which can be accessed using the toolbar buttons or using CTRL-Z and CTRL-Y keys
- Summary Window provides a read-only display of the different ports, slots, modules/transceivers, accessories, and spares of all the selected equipment or sites
- The BOM and quotation can be exported to Excel, txt, XML, IFF, RosettaNet, xCBL
- Offline mode allows users to access Iris anytime, anywhere without need for Internet connectivity
- Customizable favorites catalog
- Templates feature allows you to create re-usable designs or design fragments

IRIS 등록 및 설치

1. Click to register : <http://www.intangi.com/register.php> Partnership 하에 권한 부여



Create New Intangi Account

Intangi accounts are only available to existing, licensed Intangi partners. Please review the [Terms of Use](#) prior to completing this form.

New Account Form

Email *

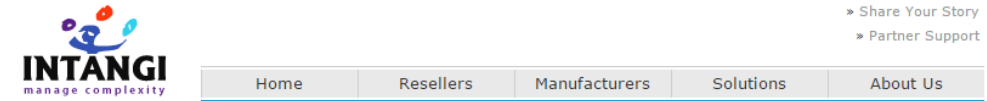
Name *

First Middle Last

Job Title

Phone Country

Password *



Partner Support

Intangi Partner Support is provided for any issue with your Intangi software, particularly administration, configuration and troubleshooting. Partner Support can also help with documentation, enhancement or new feature requests. You can also login to download the Iris software.

Use your Intangi account information to access the support site. If you do not have an Intangi account, you can create an account by using the link below.

Partner Support Center Login

Email

Password

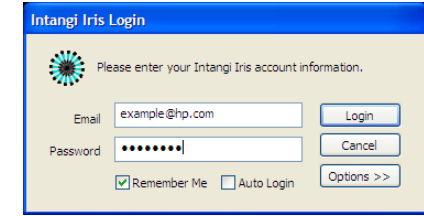
[Create New Account](#) [Reset Password](#) [Change Password](#)

로그인 및 실행

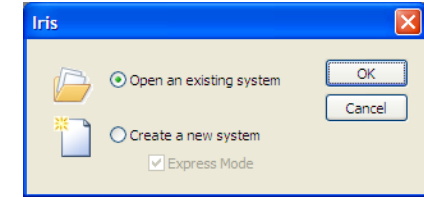
- Double click on the desktop icon to launch Iris



- Enter your username (email address) and password
- Select the remember me button if you want Iris to remember your user name
- Select the auto-login button if you want Iris to remember your password



- Iris will automatically check for any updates. If updates are available, Iris will give you the opportunity to choose if you want to install the updates or not
- Updates can include product updates, pricing updates, and Iris configurator functionality updates
- Iris requires updates to be installed at least every 7 days
- When Iris is launched it will give you the option of opening an existing design, or creating a new design. Creating a new design using express mode will automatically create a Site 1 and place you into Site 1 Design Interface view



IRIS 퀵 셋팅 Wizard

- **Default Quotation Currency:** Specifies the default currency (**Korea WON 선택**)
- **Default Units:** Specifies either Metric or English measurement units (**English 선택**)
- **Enable System Topology Features:** Select Yes if you create multi-site designs and want to enable the Topology view. Select No if you only create quotes and designs for a single site. The Topology view will be disabled for all new projects (**Yes 선택**)
- **Enable Equipment Connectivity Features:** Select Yes if you create designs with equipment interconnectivity. Select No if you work with stand-alone equipment and designs that don't require connectivity. Connectivity-related features (such as some toolbar buttons and the Port view) will be disabled in the user interface (**Yes 선택**)
- **Application Interface Color:** Choose from Aqua, Black, Blue, Silver (선호하는 색 선택)

Iris - Quick Settings Wizard

Please specify the default settings for all new systems.

Default Quotation Currency: **KR WON**

Default Units: English Metric

Enable System Topology Features: Yes No

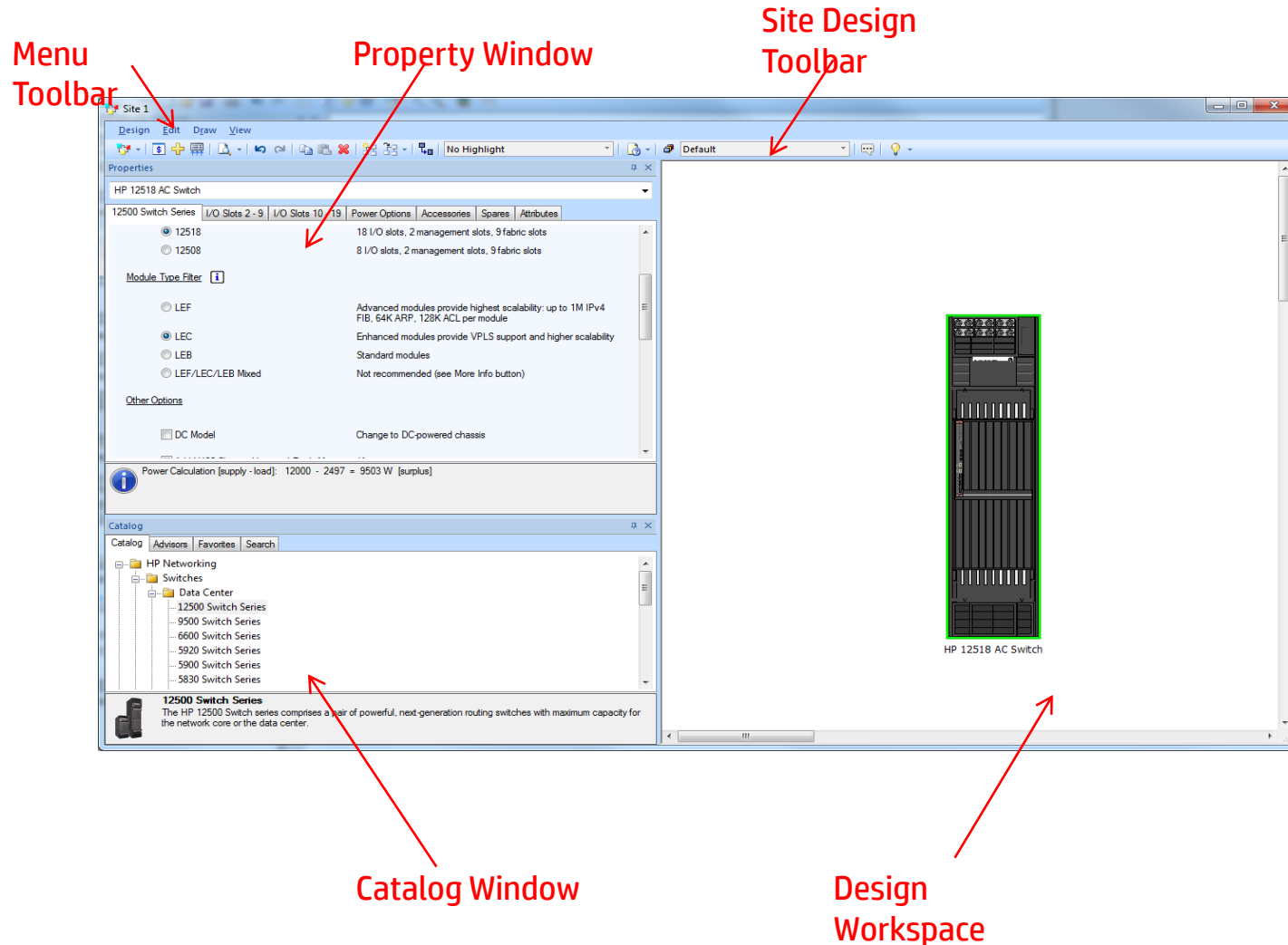
Enable Equipment Connectivity Features: Yes No

Application Interface Color: Blue

These settings and many others can be changed by selecting User Options from the Tools menu.

Done

디자인 인터페이스 셋팅



- The majority of your work will be done in the Site Design Interface
- The Site Design Interface is the main tool used for the creation of the network design for a specific site
- You can access the Site Design Interface by selecting a site in the Topology Interface and clicking on Site, then Design Window
- You can also access the design window by right clicking on a site and selecting Design Window or double-clicking on a site

디자인 인터페이스 셋팅 (cont'd)

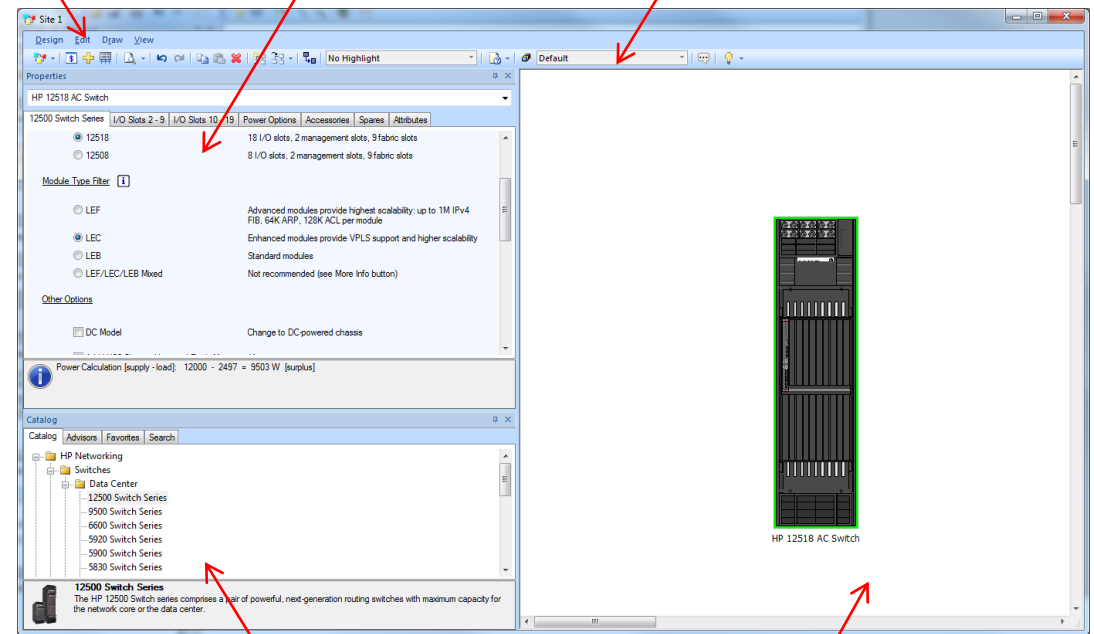
In the Design Workspace, you can do the following main tasks:

- Add equipment from the Catalog
- Select equipment for configuration in the Property Window
- Make connections between equipment and to other sites
- Add draw items and annotations to the design
- Add services to devices
- View your site network design in Block, Port, or Rack Views:
 - **Block View:** Presents a high-level network design, as pictured above
 - **Port View:** Presents a port diagram that shows the available ports on each equipment. Connections between equipment are shown emanating from their respective ports. If Collapse Ports is selected, all ports that are in the same port group will collapse and only one port will be displayed. If Expand Ports is selected, then all ports will be displayed
 - **Rack View:** Presents a rack diagram showing where equipment is racked
 - **PoE View:** When working with PoE equipment, will show the PoE consumable value for each equipment and flow values for each connection

Menu
Toolbar

Property
Window

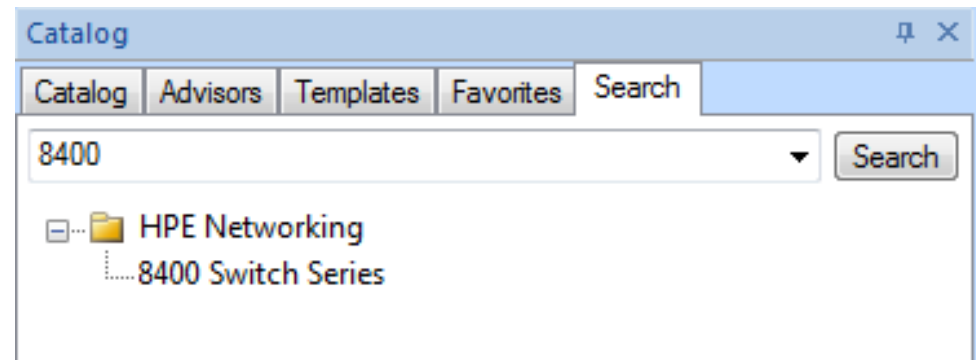
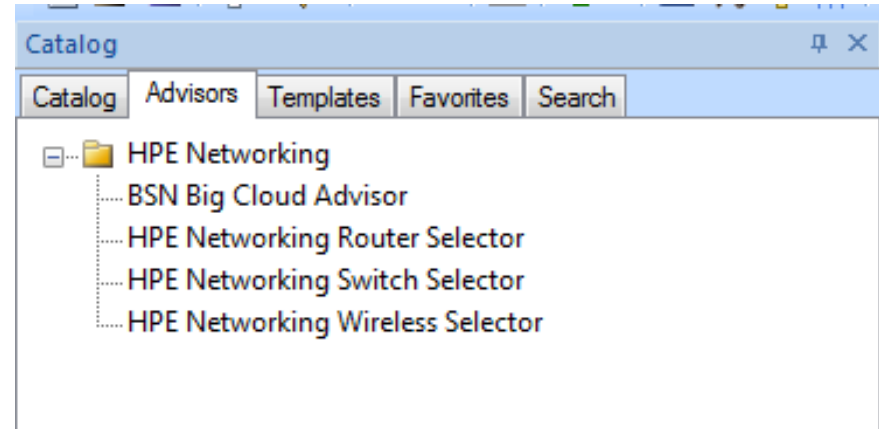
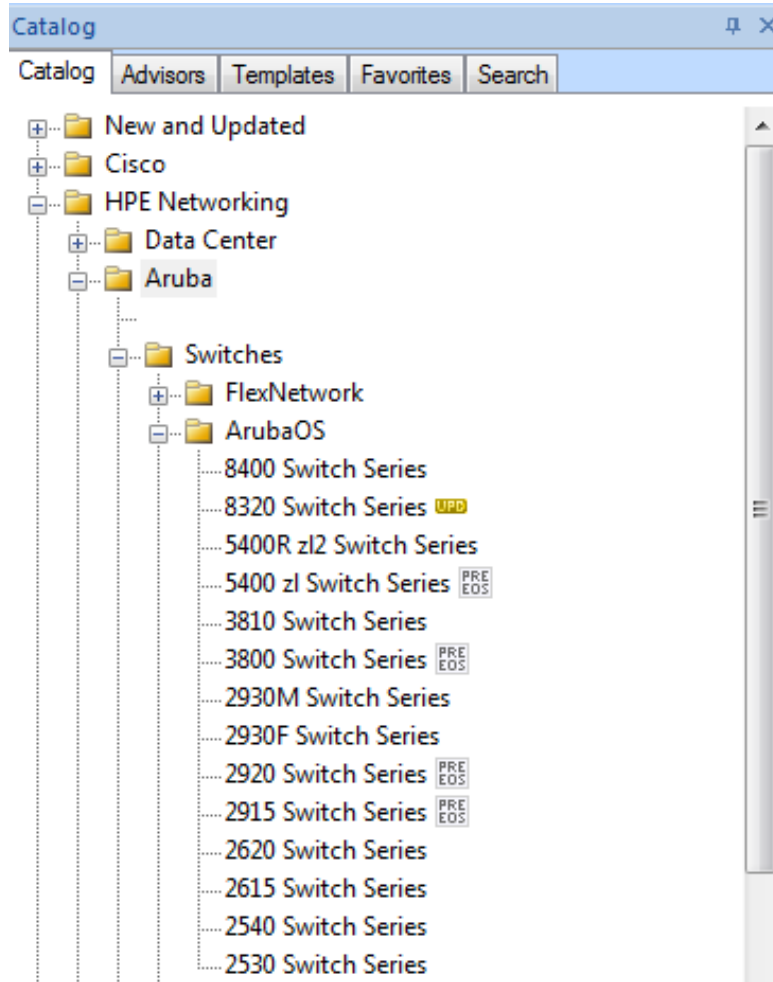
Site Design
Toolbar



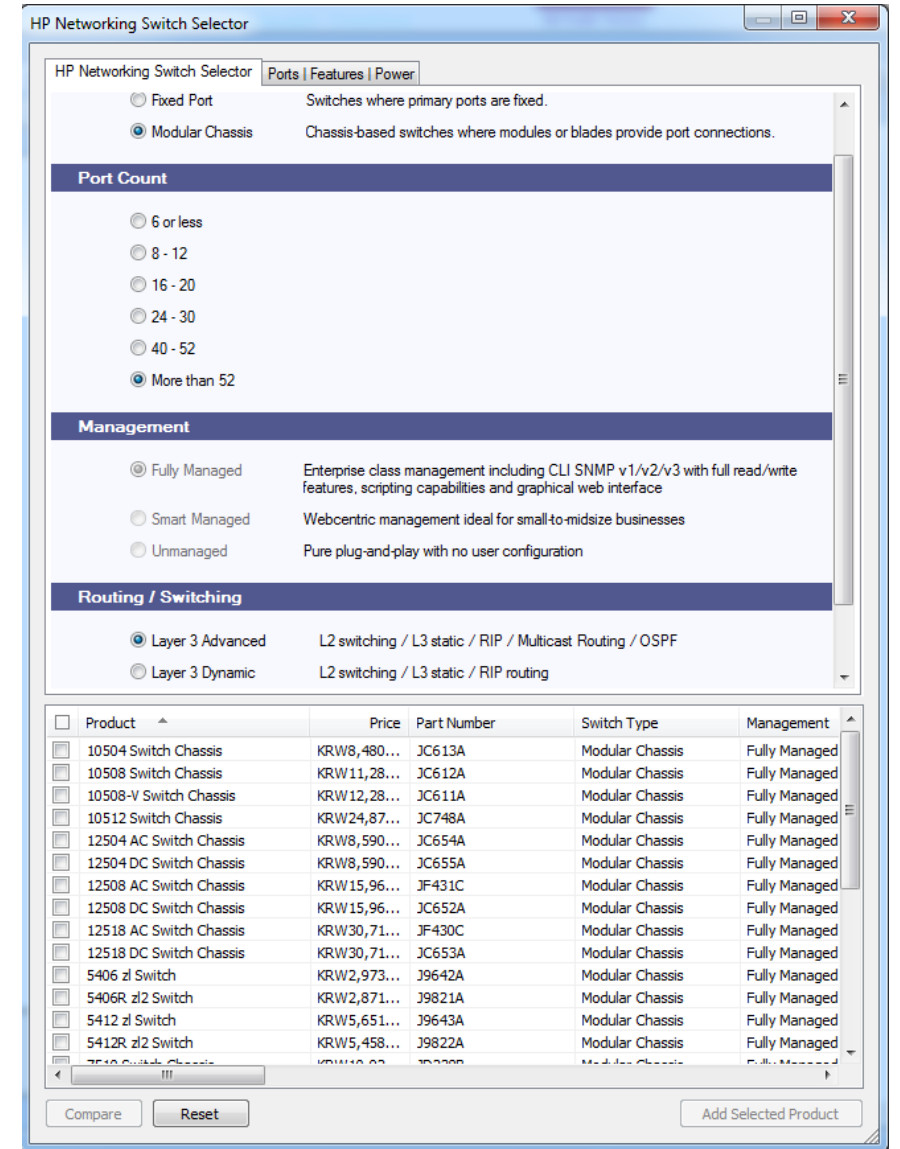
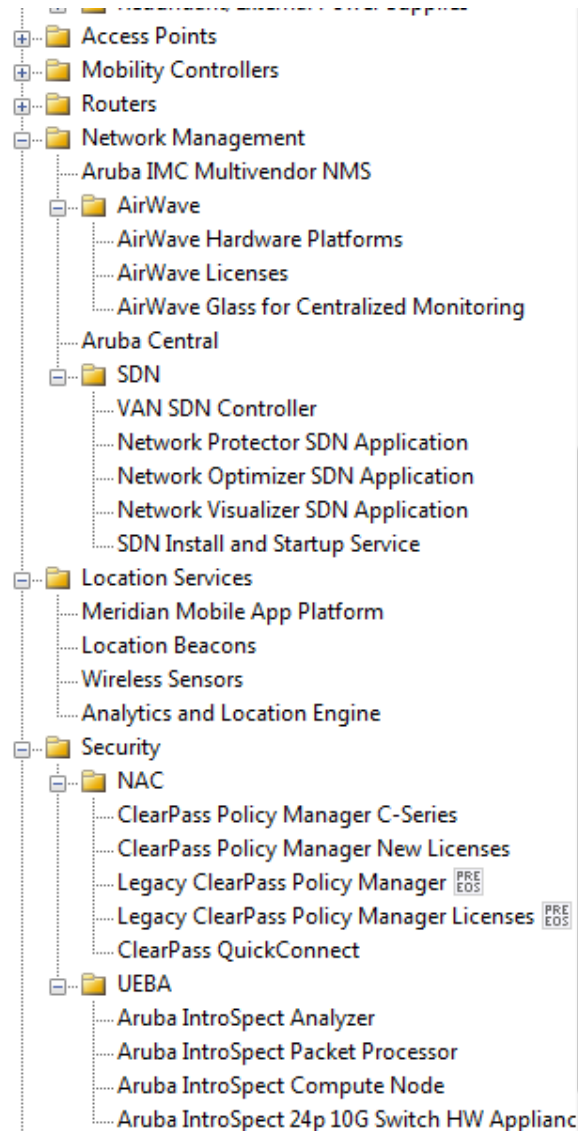
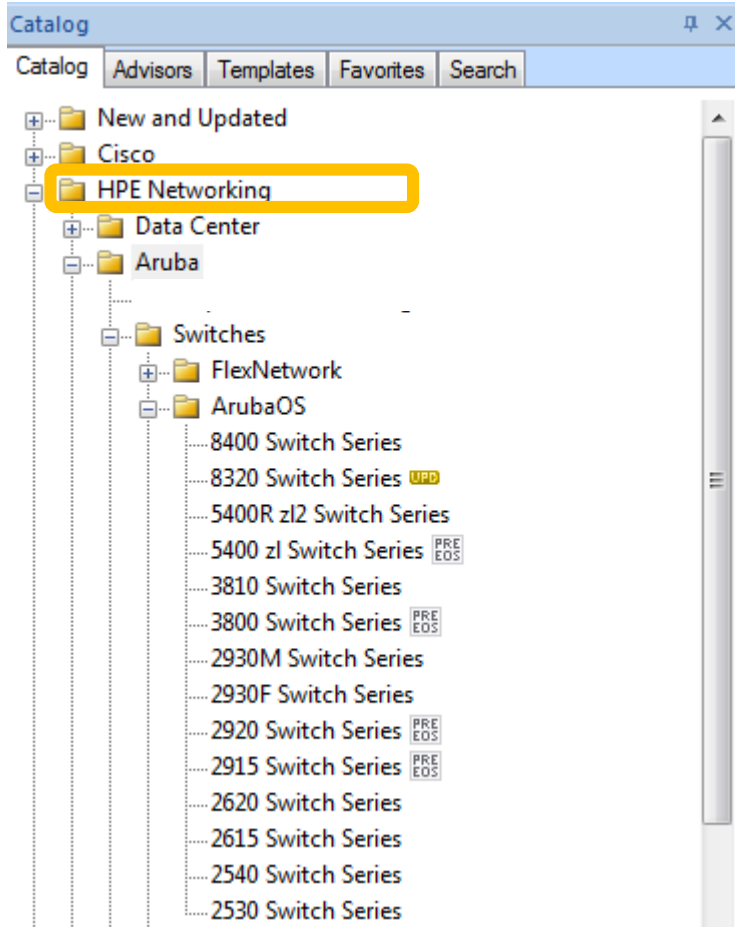
Catalog
Window

Design
Workspace

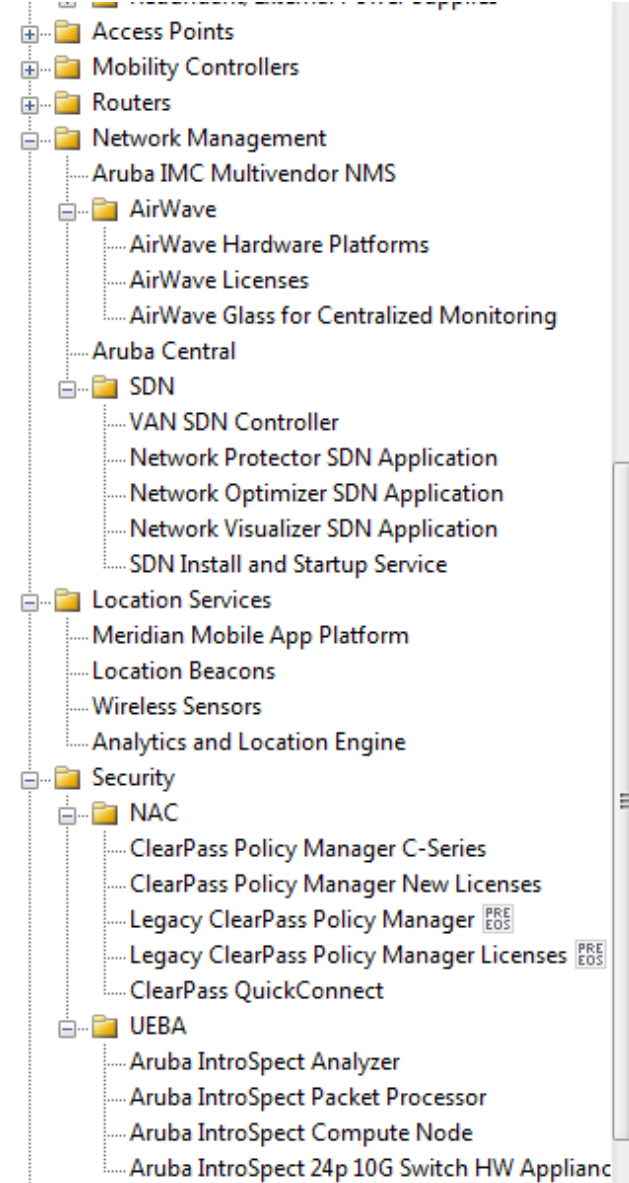
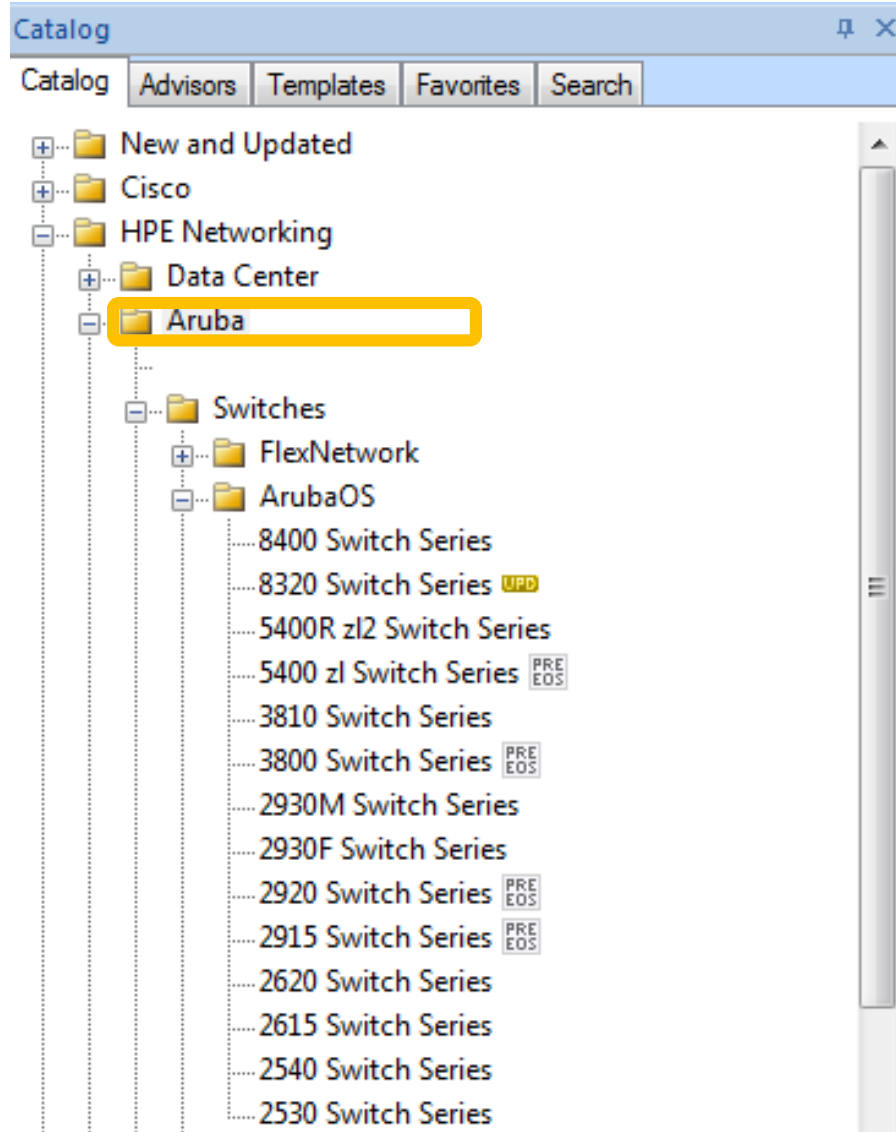
Quick Menu 살펴보기



HPE Aruba Portfolio Selector



Catalog에서 HPE Networking -> Aruba 선택



Modular Chassis의 경우: I/O Slot 선택

New System - Iris

File Site Path Design Edit Draw View Tools Window Help

Properties HP 10512 Switch

10500 Switch Series I/O Slots Power Options Accessories Spares Attributes Messages

I/O Slots ⓘ

Select a module for each slot. Then, to further configure or to add transceivers, select the module from the dropdown menu above. It is NOT recommended to mix the different types of modules in the chassis.

Cat6 cabling is the minimum required for 10GBase-T connectivity.

Note: If switching among chassis models, module selections are retained, slot port numbers may change as necessary. I/O modules marked with * have a TAA variant.

Module 1 / Slot 0

- 16p 1/10GbE SFP+ SF Module [JH193A KRW31,236,920]
- 16p 1/10GbE SFP+ SF Module [JH193A KRW31,236,920] **NEW**
- 24p 1/10GBASE-T SF Module * [JG394A KRW26,761,346]
- SC Modules
 - 16p 10GbE SFP+ SC Module [JC628A KRW38,098,080]
- SE Modules
 - 2p 100GbE CFP SE Module [JG916A KRW33,785,856]
 - 8p 10GbE SFP+ SE Module * [JC631A KRW30,723,840]
 - 4p 10GbE XFP SE Module [JC620A KRW20,892,600]
 - 44p GbE SFP / 4p 10GbE SFP+ SE Module [JH191A KRW20,562,256] **NEW**
 - 24p GbE SFP / 2p 10GbE XFP SE Module [JC617A KRW20,278,080]
 - 16p GbE SFP / 8p GbE Combo SE Module [JC763A KRW16,220,520]
 - 48p GbE SFP SE Module [JC619A KRW25,685,748]
 - 48p 1000BASE-T SE Module [JH192A KRW8,455,304] **NEW**
 - 48p Gig-T SE Module [JC618A KRW19,602,000]
- EB Modules
 - 8p 10GbE SFP+ EB Module * [JC629A KRW43,014,240]
 - 4p 10GbE XFP EB Module * [JC627A KRW28,880,280]
 - 24p GbE SFP / 2p 10GbE XFP EB Module * [JC626A KRW33,181,920]
 - 48p GbE SFP EB Module * [JC625A KRW36,869,040]
- EA Modules
 - 8p 10GbE SFP+ EA Module * [JC630A KRW36,869,040]
 - 24p GbE SFP / 2p 10GbE XFP EA Module * [JC621A KRW28,880,280]
 - 48p GbE SFP EA Module * [JC622A KRW30,723,840]
 - 48p Gig-T EA Module * [JC623A KRW25,808,760]
- EC Modules
 - 2p 100GbE CFP EC Module [JH196A KRW45,556,368] **NEW**
 - 6p 40GbE QSFP+ EC Module [JH195A KRW39,047,008] **NEW**
 - 24p 1/10GbE SFP+ EC Module [JH194A KRW38,656,904] **NEW**
- SG Modules
 - 48p 1/10GbE SFP+ SG Module [JH197A KRW37,745,136] **NEW**

HP 10512 Switch

HP 10512 Switch

10500 Switch Series I/O Slots Power Options Accessories Spares Attributes Messages

I/O Slots ⓘ

I/O Slots Info ⓘ

HP 10500 Switch Line Card Types Comparison

	SC	SE	New SE
CPU			
Memory			
Packet Buffer	2MB	4MB	?
MAC Address	32K	32K	64K
ARP	8K	16K	32K
IPv4 LPM	12K	16K	32K
IPv6 LPM	6K	8K	16K
IP Multicast	1K	2K	2K
MPLS L3 VPN	63	2K	2K
VRF Lite	63	2K	?
VPWS	N/A	1K	1K
VPLS	N/A	1K	1K
LAG (LGxPort)	N/A	128x8	1Kx2/64x32
Ingress/Egress IPv4 ACL	3K/512	3K/1K	3K/1K

Power & Optics 선택

10500 Switch Series | I/O Slots | Power Options | Accessories | Spares | Attributes | Messages

Power Options

Select the number of power supplies according to actual power consumption requirements of switch. Make sure the total max output power of the ordered power supplies is greater than the system power consumption. Reserve 20% of the max output power.

Input Power

Selection of input power affects system power consumption.

110 VAC [JC610A KRW2,826,792]
 220 VAC [JC610A KRW2,826,792]
 DC Use Accessories Tab to add -48V 3m or 15m DC Power Supply Cables [JC747A KRW3,687,120]

Power Supply Modules

Select number of total power supply modules.

6

Redundant Power Supply Modules

Indicate number of power supplies that will be used for redundancy. Supports N+1 or N+N power redundancy. (This will change the power values.)

0

New System - Iris

File Site Path Design Edit Draw View Tools Window Help

Properties

HP 10512 Switch

HP 10512 Switch

- [MPU #6] 10500 MPU
- [Slot #0] 10500 16p 1/10GbE SFP+ SF Module
- [Slot #1] 10500 24p GbE SFP / 2p 10GbE XFP EB module
- [Slot #2] 10500 44p GbE/4p 10GbE SFP+ SE Module
- [Slot #3] HP 10500 48p 1000BASE-T SE Module
- [Slot #4] 10500 6p 40GbE QSFP+ EC Module
- [Slot #5] 10500 48p 1/10GbE SFP+ SG Module
- [Fabric #14] 10512 1.52Tbps Type B Fabric Module
- [Fabric #15] 10512 1.52Tbps Type B Fabric Module
- [Fabric #16] 10512 1.52Tbps Type B Fabric Module
- [Fabric #17] 10512 1.52Tbps Type B Fabric Module

16p 1/10GbE SFP+ SF Module [JH193A KRW31,236,920]

Module 2 / Slot 1

- [Slot #0] 10500 16p 1/10GbE SFP+ SF Module

10500 16p 1/10GbE SFP+ SF Module Attributes Messages

HP 10500 16p GbE/10GbE SFP+ SF Module [JH193A]

10GbE SFP+ Ports **16 max**

Specify a quantity for each type of SFP+ transceiver. All optics feature LC connectors.

Note: SFP+ Direct Attach Cable will not be added to the equipment list until connection is made. Cables may also be added using Accessories tab.

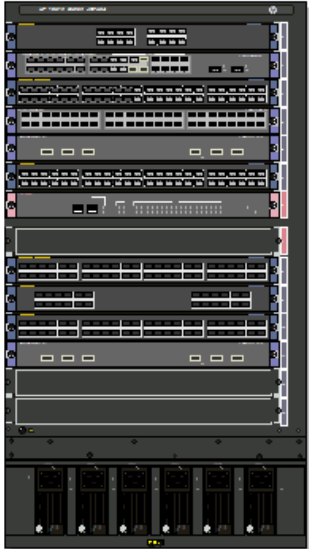
10GbE SFP+ Transceivers

8	X130 10G SFP+ LC SR Transceiver [JD092B KRW1,867,320]
0	X130 10G SFP+ LC LRM Transceiver [JD093B KRW1,965,600]
8	X130 10G SFP+ LC LR Transceiver [JD094B KRW4,545,720]
0	X130 10G SFP+ LC ER 40km Transceiver [JG234A KRW11,059,200]

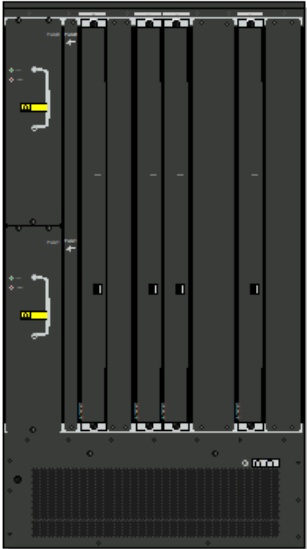
GbE SFP Transceivers

0	X120 1G SFP RJ45 T Transceiver [JD089B KRW441,720]
---	--

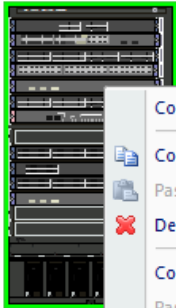
Chassis View



Front View



Back View

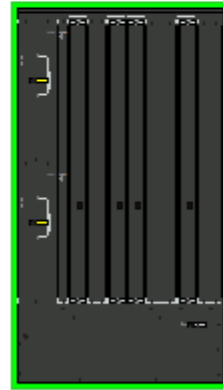


HP 10512

- Connect...
- Copy Ctrl+C
- Paste
- Delete
- Copy Configuration Ctrl+Alt+C
- Paste Configuration Ctrl+Alt+V
- Chassis View...**
- Show Back Chassis View
- Documentation ▶
- Set Design Group ▶
- Set Layer Membership
- Create Template
- Show In View ▶
- Align ▶
- Addon Parts & Services [selected items]...
- Competitive Price Info ▶

Summary Tool 활용 - mod, transceivers, 가격확인

Summary - HP 10512 Switch		Start Page	Topology	Site 1		
Ports	Slots	Modules/Transceivers	Accessories	Spares	BOM	Mini Quote
		Module/Transceiver				Quantity
		10500 16p 1/10GbE SFP+ SF Module (JH193A)				1
		10500 24p 1/10GbE SFP+ EC Module (JH194A)				1
		10500 24p GbE SFP / 2p 10GbE XFP EB module (JC626A)				1
		10500 44p GbE/4p 10GbE SFP+ SE Module (JH191A)				2
		10500 48p 1/10GbE SFP+ SG Module (JH197A)				2
		10500 6p 40GbE QSFP+ EC Module (JH195A)				2
		10500 MPU (JC614A)				1
		10512 1.52Tbps Type B Fabric Module (JC749A)				4
		HP 10500 48p 1000BASE-T SE Module (JH192A)				1
		X120 1G SFP LC BX 10-U Transceiver (JD098B)				2
		X120 1G SFP LC LX Transceiver (JD119B)				22
		X120 1G SFP LC SX Transceiver (JD118B)				2
		X120 1G SFP RJ45 T Transceiver (JD089B)				38
		X130 10G SFP+ LC LR Transceiver (JD094B)				8
		X130 10G SFP+ LC LRM Transceiver (JD093B)				48
		X130 10G SFP+ LC SR Transceiver (JD092B)				12
		X130 10G XFP LC LR Transceiver (JD108B)				1
		X170 1G SFP LC LH70 1510 Transceiver (JD115A)				1
		X180 10G XFP LC 1539.77 DWDM Transceiver (JG227A)				1



HP 10512 Switch

Ports	Slots	Modules/Transceivers	Accessories	Spares	BOM	Mini Quote
Part Number				Unit Price	Qty	Total
JC748A				KRW24,872,292	1	KRW24,872,292
JC610A				KRW2,826,792	6	KRW16,960,752
JC665A				KRW352,728	1	KRW352,728
JC749A				KRW13,517,280	4	KRW54,069,120
JC614A				KRW12,166,308	1	KRW12,166,308
JH193A				KRW31,236,920	1	KRW31,236,920
JD092B				KRW1,867,320	12	KRW22,407,840
JD094B				KRW4,545,720	8	KRW36,365,760
JC626A				KRW33,181,920	1	KRW33,181,920
JD089B				KRW441,720	38	KRW16,785,360
JD118B				KRW515,160	2	KRW1,030,320
JD098B				KRW1,534,680	2	KRW3,069,360
JD115A				KRW6,144,120	1	KRW6,144,120
JD108B				KRW4,791,960	1	KRW4,791,960
JG227A				KRW21,358,080	1	KRW21,358,080
JH191A				KRW20,562,256	2	KRW41,124,512
JD119B				KRW1,104,840	22	KRW24,306,480
JH192A				KRW8,455,304	1	KRW8,455,304
JH195A				KRW39,047,008	2	KRW78,094,016
JH197A				KRW37,745,136	2	KRW75,490,272
JD093B				KRW1,965,600	48	KRW94,348,800
JH194A				KRW38,656,904	1	KRW38,656,904
Quote Total						KRW645,269,128

기술지원 Technical Service 선택

[JC748A] Add-on Parts & Services

Manufacturer: HP Networking | Status: Per Parent

HP Fixed Care Pack Services

Not Needed	Foundation Care (FC) Services																Proactive Care (PC) Services											
	Onsite Services (onsite labor + parts)												Parts Exch (no onsite labor)				Onsite Services (no onsite labor)											
	FC Next Business Day		FC 9x5		FC 24x7		FC Call-to-Repair				PC NBD Exch		PC 4h Exch		PC NBD Onsite		PC 4h Onsite											
	5y	1y	3y	4y	5y	1y	3y	1y	3y	4y	5y	1y	3y	4y	5y	3y	4y	5y	3y	4y	5y	3y	4y	5y	3y	4y	5y	
HP 10512 Switch																												
JC748A HP 10512 Switch Chassis	<input type="checkbox"/>	<input type="checkbox"/>	<input type="checkbox"/>	<input type="checkbox"/>	<input type="checkbox"/>	<input type="checkbox"/>	<input type="checkbox"/>	<input type="checkbox"/>	<input type="checkbox"/>	<input type="checkbox"/>	<input type="checkbox"/>	<input type="checkbox"/>	<input type="checkbox"/>	<input type="checkbox"/>	<input type="checkbox"/>	<input type="checkbox"/>	<input type="checkbox"/>	<input type="checkbox"/>	<input type="checkbox"/>	<input type="checkbox"/>	<input type="checkbox"/>	<input type="checkbox"/>	<input type="checkbox"/>	<input type="checkbox"/>	<input type="checkbox"/>	<input type="checkbox"/>	<input type="checkbox"/>	<input type="checkbox"/>
12x JD092B HP X130 10G SFP+ LC SR	<input type="checkbox"/>																											
8x JD094B HP X130 10G SFP+ LC LR	<input type="checkbox"/>																											
38x JD089B HP X120 1G SFP RJ45 T	<input type="checkbox"/>																											
2x JD118B HP X120 1G SFP LC SX	<input type="checkbox"/>																											

Part Number	Description	Unit Price	Quantity	Extended Price	Status

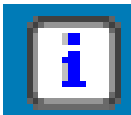
Quotation 보기 & 출력

The screenshot shows the Iris software interface with a quotation for a switch chassis. The main window displays a list of items with their descriptions, manufacturers, unit prices, quantities, and totals. The 'Export to Excel' option is highlighted in the 'Export' menu.

Description	Manufacturer	Unit Price	Quantity	Total	Price List
HP 10512 Switch Chassis	HP Networking	KRW24,87...	1	KRW24,87...	Korea Price List (KRW)
HP 10500 2500W AC Power Supply	HP Networking	KRW2,826...	6	KRW16,96...	Korea Price List (KRW)
HP X421 Chassis Universal Rck Mntg Kit	HP Networking	KRW352,728	1	KRW352,728	Korea Price List (KRW)
HP 10512 1.52Tbps Type B Fabric Module	HP Networking	KRW13,51...	4	KRW54,06...	Korea Price List (KRW)
HP 10500 Main Processing Unit	HP Networking	KRW12,16...	1	KRW12,16...	Korea Price List (KRW)
HP 10500 16p GbE/10GbE SFP+ SF Mod	HP Networking	KRW31,23...	1	KRW31,23...	Korea Price List (KRW)
HP X130 10G SFP+ LC SR Transceiver	HP Networking	KRW1,867...	12	KRW22,40...	Korea Price List (KRW)
HP X130 10G SFP+ LC LR Transceiver	HP Networking	KRW4,545...	8	KRW36,36...	Korea Price List (KRW)
HP 10500 24p GbE / 2p 10GbE XFP EB Mod	HP Networking	KRW33,18...	1	KRW33,18...	Korea Price List (KRW)
HP X120 1G SFP RJ45 T Transceiver	HP Networking	KRW441,720	38	KRW16,78...	Korea Price List (KRW)
HP X120 1G SFP LC SX Transceiver	HP Networking	KRW515,160	2	KRW1,030...	Korea Price List (KRW)
HP X120 1G SFP LC BX 10-U Transceiver	HP Networking	KRW1,534...	2	KRW3,069...	Korea Price List (KRW)
HP X170 1G SFP LC LH70 1510 Transceiver	HP Networking	KRW6,144...	1	KRW6,144...	Korea Price List (KRW)
HP X130 10G XFP LC LR Transceiver	HP Networking	KRW4,791...	1	KRW4,791...	Korea Price List (KRW)
HP X180 10G XFP LC 1539.77 DWDM Transceiver	HP Networking	KRW21,35...	1	KRW21,35...	Korea Price List (KRW)
HP 10500 44p GbE/4p 10GbE SFP+ SE Mod	HP Networking	KRW20,56...	2	KRW41,12...	Korea Price List (KRW)
HP X120 1G SFP LC LX Transceiver	HP Networking	KRW1,104...	22	KRW24,30...	Korea Price List (KRW)
HP 10500 48p 1000BASE-T SE Mod	HP Networking	KRW8,455...	1	KRW8,455...	Korea Price List (KRW)
HP 10500 6p 40GbE QSFP+ EC Mod	HP Networking	KRW39,04...	2	KRW78,09...	Korea Price List (KRW)

Multiple product 생성: ctrl c+ ctrl v





Icon 100% 활용

FIPS (Federal Information Processing Standards)
Only available in USA and Canada for sale to US F and HI switches with TAA option.

Opacity Shield Kit
 Tamper Evidence Labels [JG585A]

Redundant Power

Click Info button for more details about external RPS 800/1600 and choose cables in the Accessory list. PoE ports and cables will be added to the quotation.

When using the HP RPS1600 with the 5500-24G-EI Switch, the maximum PoE power available is 370W.

When using the HP RPS1600 with the 5500-48-PoE Switch, the maximum PoE power available is 740W.


IRF Compatibility Information

Click the Info button for more details about IRF compatibility.

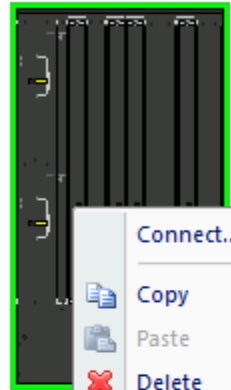
IRF Compatibility for HP Networking Switches

IRF Compatibility for HP Networking Switches (Apr 2015) – v2.3

Switch Series	Maximum devices in IRF domain	IRF link capacity	Max Physical Ports per IRF-Port
12900	2	Must use 10GbE/40GbE links	8
12500	4	Must use 10GbE/40GbE links	12
11900	4	Must use 10GbE/40GbE links	8
10500	4	Must use 10GbE/40GbE links	8
9500	4	Must use 10GbE links	8
7900	2 (4 future) – IRF code targeted for GA Oct 2014	Must use 10GbE/40GbE links	8
7500	4 (7503, 7506) 2 (7510, 7503-S) (IRF functionality is not supported on HP 7502 Switch Chassis)	Must use 10GbE/40GbE links	8


HP 5500-24G EI Switch

Documentation 100% 활용 – Product Information







HP 10

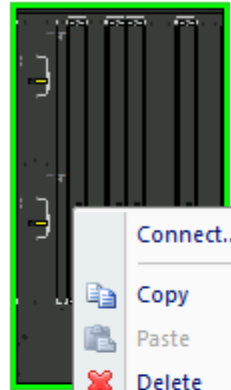
- Connect...
- Copy Ctrl+C
- Paste
- Delete
- Copy Configuration Ctrl+Alt+C
- Paste Configuration Ctrl+Alt+V
- Chassis View...
- Show Back Chassis View
- Documentation**
- Set Design Group
- Set Layer Membership
- Create Template
- Show In View
- Align

- Product Information**
- HP 10500 Switch Series Overview
- HP 10500 Switch Series QuickSpecs
- HP X125 1G SFP Transceivers QuickSpecs
- HP X12x 1G SFP LC Transceivers QuickSpecs
- HP X120 1G SFP LC BX Transceivers QuickSpecs

0500 Switch Series Product Information

Product	10504 Switch Chassis	10508 Switch Chassis	10508-V Switch Chassis	10512 Switch Chassis
	 KRW8,480,376 chassis only	 KRW11,281,421 chassis only	 KRW12,289,320 chassis only	 KRW24,872,292 chassis only
Part Number	JC613A	JC612A	JC611A	JC748A
Switch Type	Modular Chassis	Modular Chassis	Modular Chassis	Modular Chassis
Management	Fully Managed	Fully Managed	Fully Managed	Fully Managed
Routing / Switching	Layer 3 Advanced	Layer 3 Advanced	Layer 3 Advanced	Layer 3 Advanced
Included Accessories				
Included Accessories	includes: 1 x JC632A fan tray	includes: 1 x JC633A fan tray	includes: 1 x JC634A fan tray	includes: 1 x JC758A, JC773A 2 fan tray slots
Physical Properties				
Dimensions	25.98(d) x 17.32(w) x 13.9(h) in. (66.0 x 44.0 x 35.3 cm) (8U height)	25.98(d) x 17.32(w) x 24.41(h) in. (66.0 x 44.0 x 62.0 cm) (14U height)	25.98(d) x 17.32(w) x 34.88(h) in. (66.0 x 44.0 x 88.6 cm) (20U height)	25.98(d) x 17.32(w) x 31.38(h) in. (66.0 x 44.0 x 79.7 cm) (18U height)
Weight	85.32 lb. (38.7 kg) chassis 184.28 lb. (83.59 kg) full configuration weight	125 lb. (56.7 kg) chassis 271.06 lb. (122.95 kg) full configuration weight	169.23 lb. (76.9 kg) chassis 317.02 lb. (143.8 kg) full configuration weight	166.23 lb. (75.4 kg) chassis 380.95 lb. (172.8 kg) full configuration weight
Port Types				
LAN Ports	up to (192) 10/100/1000 LAN ports with optional modules	up to (384) 10/100/1000 LAN ports with optional modules	up to (384) 10/100/1000 LAN ports with optional modules	up to (576) 10/100/1000 LAN ports with optional modules
Dual Personality Ports	N/A	N/A	N/A	N/A
SFP Ports	up to (192) SFPs ports with optional modules	up to (384) SFPs ports with optional modules	up to (384) SFPs ports with optional modules	up to (576) SFPs ports with optional modules
SFP+ Ports	up to (192) SFP+ ports with optional modules	up to (384) SFP+ ports with optional modules	up to (384) SFP+ ports with optional modules	up to (576) SFP+ ports with optional modules
XFP Ports	up to (16) XFP ports with optional modules	up to (32) XFP ports with optional modules	up to (32) XFP ports with optional modules	up to (32) XFP ports with optional modules
X2 Ports	N/A	N/A	N/A	N/A
CX4 Ports	N/A	N/A	N/A	N/A
10GBASE-T Ports	N/A	N/A	N/A	N/A
QSFP+ Ports	up to (32) QSFP+ ports with optional modules	up to (64) QSFP+ ports with optional modules	up to (64) QSFP+ ports with optional modules	up to (96) QSFP+ ports with optional modules
Module Slots	4 open module slots 2 MPU (for management modules) slots 4 switch fabric slots	8 open module slots 2 MPU (for management modules) slots 4 switch fabric slots	8 open module slots 2 MPU (for management modules) slots 4 switch fabric slots	12 open module slots 2 MPU (for management modules) slots 4 switch fabric slots

Documentation 100% 활용 - Overview



HP 10

- Connect...
- Copy Ctrl+C
- Paste
- Delete
- Copy Configuration Ctrl+Alt+C
- Paste Configuration Ctrl+Alt+V
- Chassis View...
- Show Back Chassis View
- Documentation**
 - Product Information
 - HP 10500 Switch Series Overview
 - HP 10500 Switch Series QuickSpecs
 - HP X125 1G SFP Transceivers QuickSpecs
 - HP X12x 1G SFP LC Transceivers QuickSpecs
 - HP X120 1G SFP LC BX Transceivers QuickSpecs
- Set Design Group
- Set Layer Membership
- Create Template
- Show In View
- Align

a Hewlett Packard
Enterprise company



Switches/



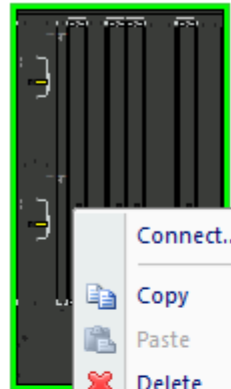
Modular Ethernet Switches
HP 10500 Switch Series

좋아요 4
Learn more

PRODUCT DEMO

Image may differ from actual product.

Documentation 100% 활용 - QuickSpecs



HP 10

- Connect...
- Copy Ctrl+C
- Paste
- Delete
- Copy Configuration Ctrl+Alt+C
- Paste Configuration Ctrl+Alt+V
- Chassis View...
- Show Back Chassis View
- Documentation**
 - Product Information
 - HP 10500 Switch Series Overview
 - HP 10500 Switch Series QuickSpecs
 - HP X125 1G SFP Transceivers QuickSpecs
 - HP X12x 1G SFP LC Transceivers QuickSpecs
 - HP X120 1G SFP LC BX Transceivers QuickSpecs
- Set Design Group
- Set Layer Membership
- Create Template
- Show In View
- Align



Switches/



Modular Ethernet Switches HP 10500 Switch Series

Select a model

QuickSpecs

HP 10500 Switch Series

Overview

HP 10500 Switch Series

Models

HP 10504 Switch Chassis	JC613A
HP 10508 Switch Chassis	JC612A
HP 10508-V Switch Chassis	JC611A
HP 10512 Switch Chassis	JC748A

Product overview

The HP 10500 Switch Series se architecture. Designed for entr capable infrastructure. The sw consumption.

With HP Intelligent Resilient F: and virtualized across up to fo series, along with the entire HI Center (IMC), which provides a

QuickSpecs

HP X125 1G SFP Transceivers

Overview

Models

HP X125 1G SFP LC LH70 Transceiver	JD063B
HP X125 1G SFP RJ45 T Transceiver	JD089B

Key features

- SFP form factor
- 1G Ethernet transmission speed
- Up to 70km transmissions on single mode fiber
- 1550nm wavelength
- MSA compliant

Product overview

HP transceivers are designed and rigorously tested to meet the needs of critical network deployments. This product is a small form-factor pluggable SFP Gigabit LH70 transceiver that provides a full duplex Gigabit solution up to 70km on a single-mode fiber. Use only genuine HP transceivers in HP networking equipment.

Warranty and support