

디지털 트랜스포메이션을 통한
비즈니스 혁신과 4차 산업혁명 대응을 위한

GIT 솔루션즈 데이

생체인증 동향 그리고...

2018.10 / (주)시큐어가드테크놀러지 이동균

목차

The Problem	3p
The Solutions	7p
The APPM for ESSO	16p

The Problem

2018 Data Breach Investigations Report

Research report

11th edition

Top 20 action varieties in breaches

Use of stolen credentials (hacking)

399

RAM scraper (malware)

312

Phishing (social)

236

Privilege abuse (misuse)

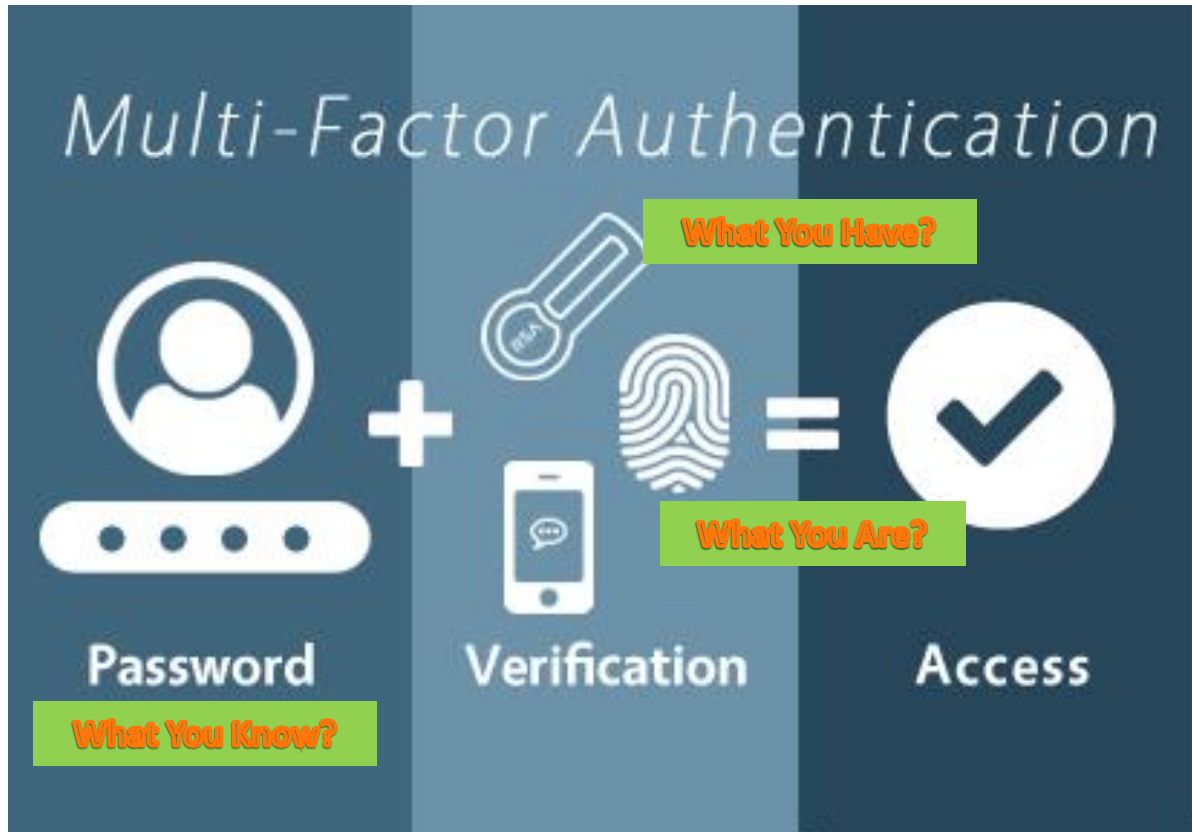
201

The Problem



WE NEED
NEW MODEL

The Problem



The Problem



WE CALL
BIO LOGIN

Windows OS/Applications

세상의 모든 IT 기기를
BIO LOGIN하자

The Solutions

Shapes:



ARCH



WHORL



LOOP

Minutiae:



END



BIFURCATION



ISLAND

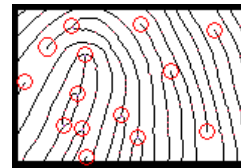


LAKE



DOT

unique arrangement of minutiae for different people



False acceptance rate $<0.001 \sim 0.01$

False rejection rate $<0.1 \sim 0.5$



- ◆ Non-intrusive, Reliable, Inexpensive
- ◆ Semiconductor or Optical
- ◆ Useful mostly for verification and less for identification
- ◆ US stores experimented with payment by fingerprint...

The Solutions

- Controlled scene – access control
 - Frontal view, similar distance, reasonable lighting
 - Compare live image to an original, captured in similar environment
 - Usually for verification purposes, with another ID
- Algorithms extract features, and compare relative positions of eyes, nose, and mouth, nose width, and other factors
- Relatively user-friendly
- Not very accurate, and **requires frequent updates**



- Very difficult in a random scene – street, airports
 - Much more difficult
 - Law enforcement applications

False acceptance rate <1~1.3
False rejection rate <1~2.6

The Solutions

- Vein patterns are unique to an individual (even twins)
- Scanned with infrared rays, using reflective photography
- False acceptance rate $<0.00008 \sim 0.0001$
- False rejection rate $<0.01 \sim 0.1$



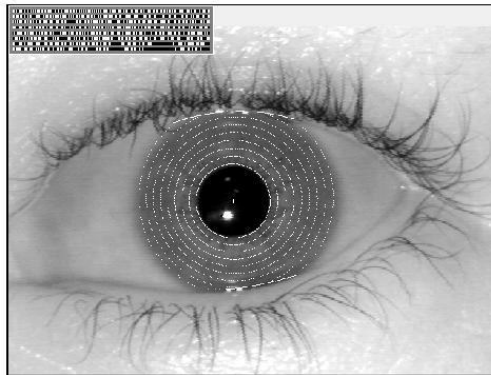
PalmSecure (Fujitsu)



FingerVein (Hitachi)

The Solutions

- ◆ Human eye encodes 3.4bits/sqmm
- ◆ Extremely accurate: chance of duplication (including twins) $< 10^{-72}$
- ◆ Fast comparison: Identification takes 2sec per 100,000 people in DB
- ◆ Sub-\$1000 systems are available, but expensive to enroll many
- ◆ Considered a little intrusive / dangerous by some people
- ◆ Growing in market share vs. other solutions (patents expired)



False acceptance rate $< 0.00083 \sim 0.0001$

False rejection rate $< 0.0001 \sim 0.1$

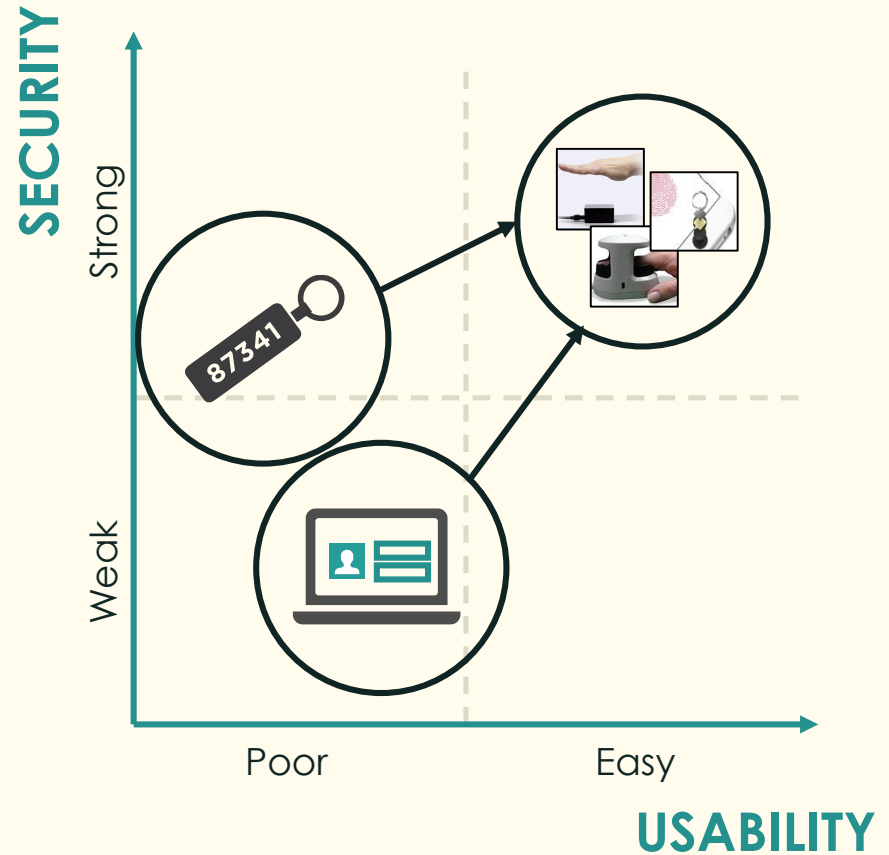
The Solutions

THE OLD PARADIGM



The Solutions

THE NEW PARADIGM



The Solutions

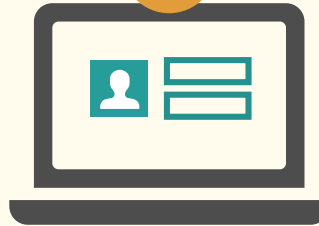
Password LOGIN

1



Authentication Challenge

2



ID/Password
Verification

3



Authenticated
Online

BIO LOGIN

1



Authentication Challenge

2



Touch BIO Devices

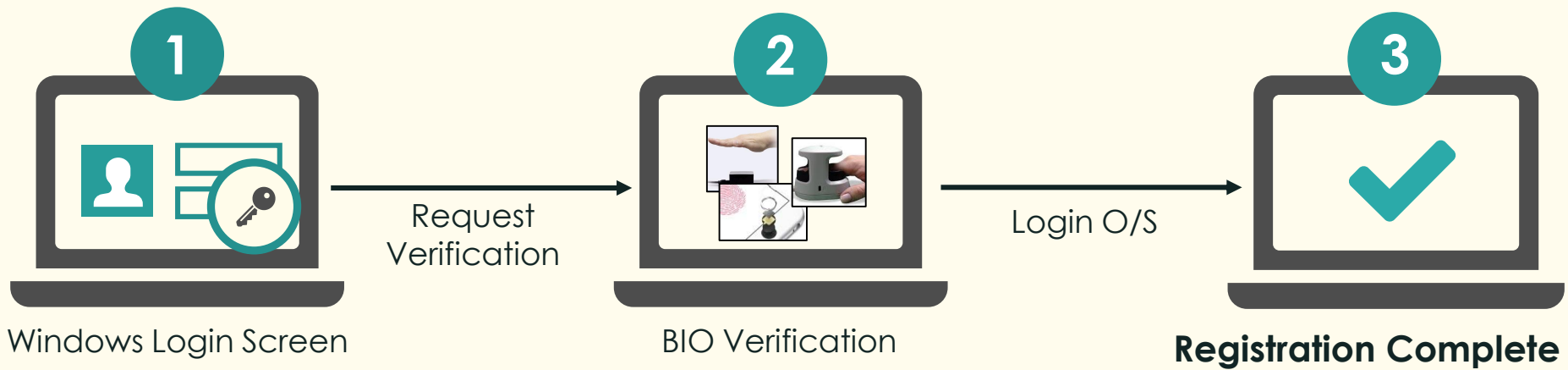
3



Authenticated
Online

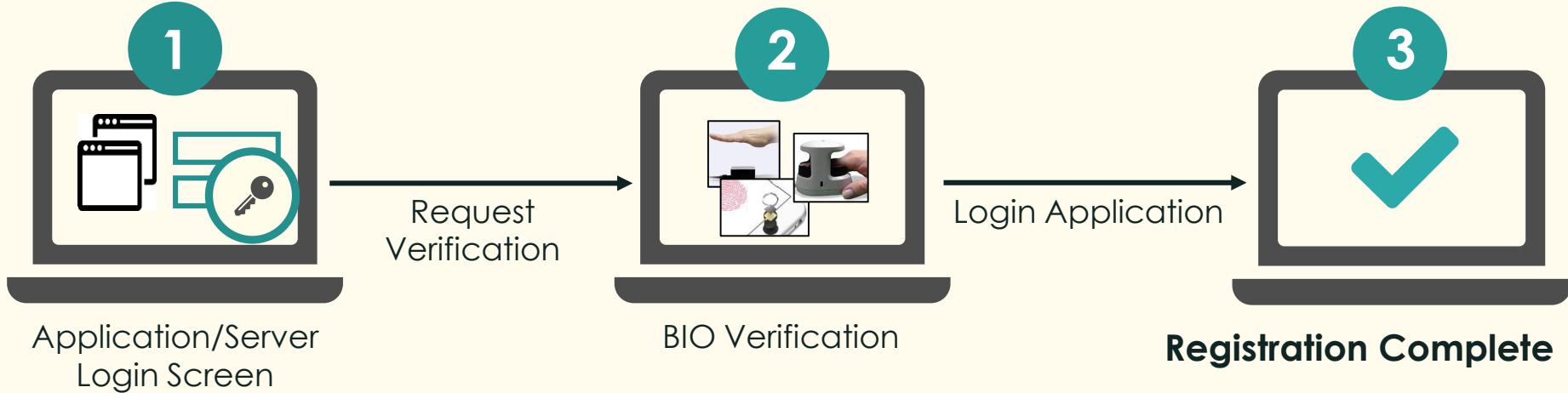
The Solutions

PC Bio Login



The Solutions

Application/Server Bio Login



The APPM for ESSO



The APPM for ESSO



The APPM for ESSO

APPM 2.6.01 - [hbang]

다시읽기 확장 설정 비밀번호 계정등록 APPM웹 도움말

호스트명 IP주소 계정 용도

비 승인 계정 리스트 승인 계정 리스트

계정	호스트종류	IP주소	용도
보안장비			
APPM	APPM	192.168.1.208	-
hbang			
Juniper_FW	Juniper_FW	192.168.1.1	-
test			
방학재			
서버/네트워크장비			
AD	WinAgent	192.168.1.200	-
Administrator			
cisco	Cisco	192.168.1.44	-
cisco			
linux	Linux	192.168.1.205	테스트서
oracle			
root			
suroot			
testmail01			
win2008	WinAgent		
Administrator			
appm[잠김]			
어플리케이션			
SGT			
www.sgtech.co.kr			
vsphere			
vsphere			
192.168.1.100			
카메라			
AXIS	AXIS	192.168.2.40	-
root			

ssh
sftp
telnet
ftp
자동 접속
패스워드 조회
계정 삭제

Copyright SecureGuard Tech Corp. All rights Reserved



계정

- 보안장비
 - APPM APPM
 - hbang
 - Juniper_FW Juniper_FW
 - test
 - 방학재
- 서버/네트워크장비
 - AD WinAgent
 - Administrator
 - cisco Cisco
 - cisco
 - linux Linux
 - oracle
 - root
 - suroot
 - testmail01
 - win2008 WinAgent
 - Administrator
 - appm[잠김]
- 어플리케이션

192.168.1.205 - PuTTY

```
Using username "oracle".
Last login: Mon Sep 10 13:23:40 2016 from 192.168.1.152
oracle@appm:~>
```

디지털 트랜스포메이션을 통한
비즈니스 혁신과 4차 산업혁명 대응을 위한

GIT 솔루션즈 데이

감사합니다.
