

PURE// ACCELERATE DIGITAL KOREA 2021

BREAKTHROUGH

상상을 초월하는 혁신

디지털 트랜스포메이션, 이제 퓨어스토리지의 혁신적인 솔루션을 통하여 쉬워집니다.

김민철 지사장 직무대행
mc.kim@purestorage.com
Pure Storage Korea

#PUREACCELERATE





Bottlenecks to Breakthroughs:

Cloud Ready

Everything-as-a-Service | Cloud Data Mobility | Modern Apps & Orchestration



One single platform for any app, anywhere

Any App

DATABASE	ANALYTICS	STREAMING	SEARCH/LOG	5G/IoT	AI/ML
cassandra	MySQL	spark	kafka	elastic	Solr
Couchbase	CLOUDERA	RabbitMQ	splunk>	TensorFlow	PyTorch

Any Distribution **kubernetes**

OPENSIFT Amazon EKS GKE AKS Tanzu

portworx
by Pure Storage

The industry's leading **Kubernetes Data Services Platform**
for building, automating, protecting, and securing Cloud Native applications.

Any Cloud

aws

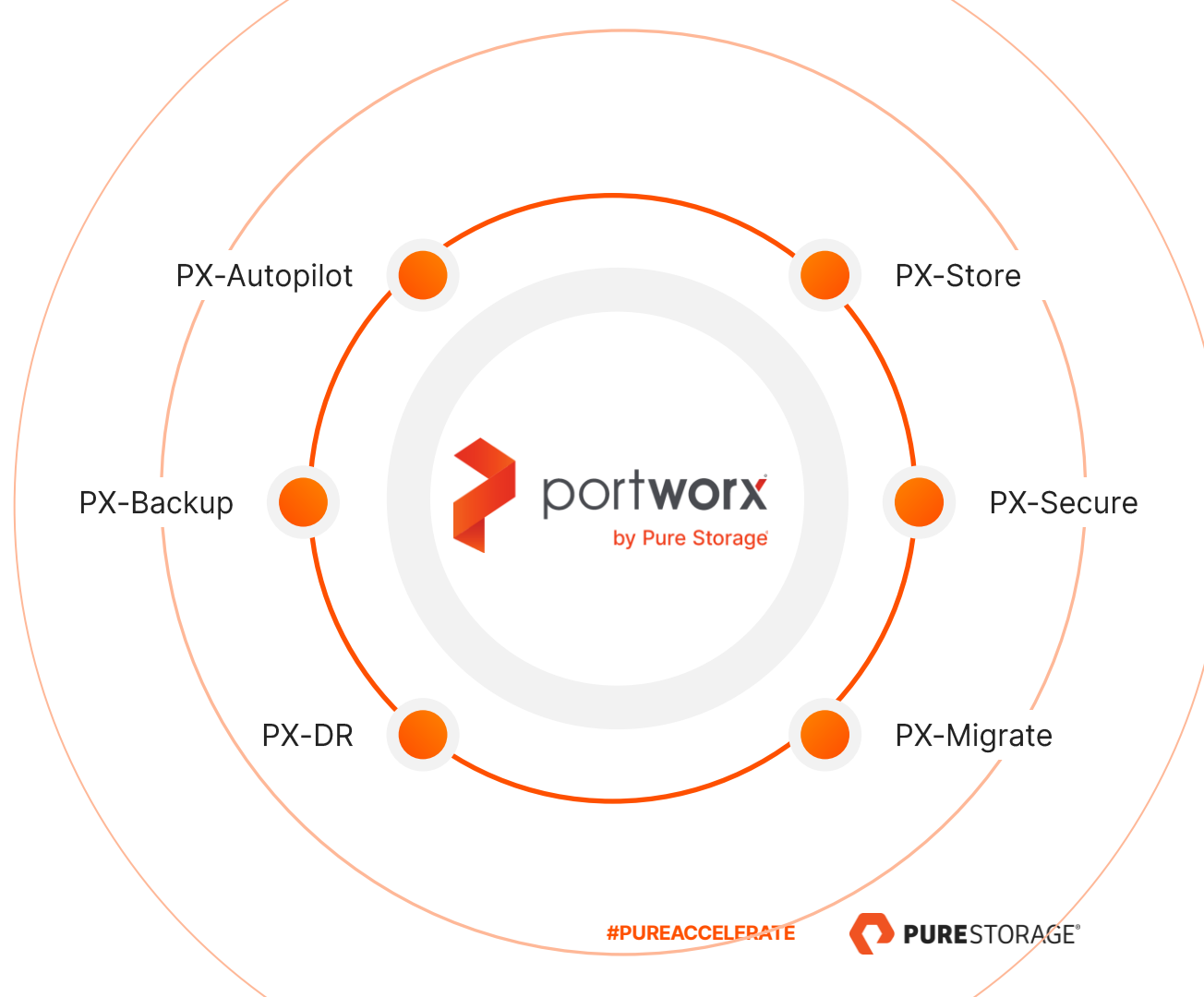
Any Infrastructure

Bare Metal vmware IBM DELL Hewlett Packard Enterprise NetApp PURE STORAGE

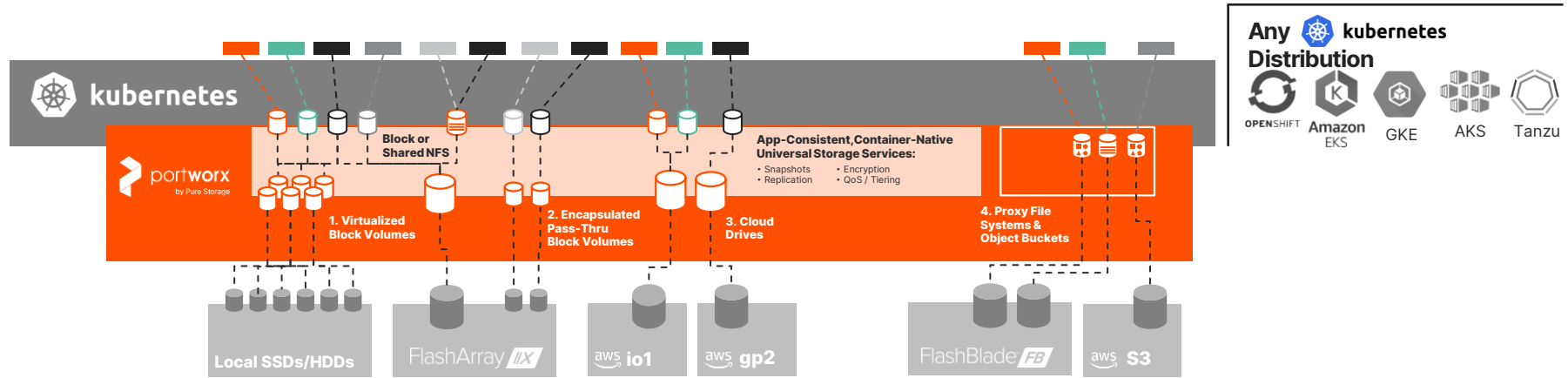
Every Stage

Pilot Test/Dev Go Live Global CaaS

Portworx is the most complete data services platform



Announcing Portworx Enterprise 2.8



A Single Container-Native Control Plane for all K8s Storage Needs

Multiple Storage Classes

- Block, file, object
- Multiple performance levels
- Multiple protection levels

Consistent, App-Aware Capabilities

- Snapshots
- Encryption
- Replication
- All app-aware

Flexible Protection & Disaster Recovery

- App-aware snaps and backups
- Cross-Rack, Row, AZ, Region replication
- Sync and async
- Cloud & on-prem

Infrastructure Agility / Migration

- Migrate containers between storage classes
- Migrate / lifecycle HW infrastructure
- Migrate between cloud providers

Optimized for Scale, Reliability, and RPM Rate

- 1,000s of nodes, 100s of clusters, 100,000s of containers
- 10s of PBs scale
- 10,000s operations/day
- 6x9s of availability

It's so easy to get started

Try PX-Essentials for free

- Freemium
- Just download and use!
- Documentation and community support

30-Day Free Trial

- Portworx Enterprise
- PX-Backup
- All features, no limits

Pay-as-you-go and subscription

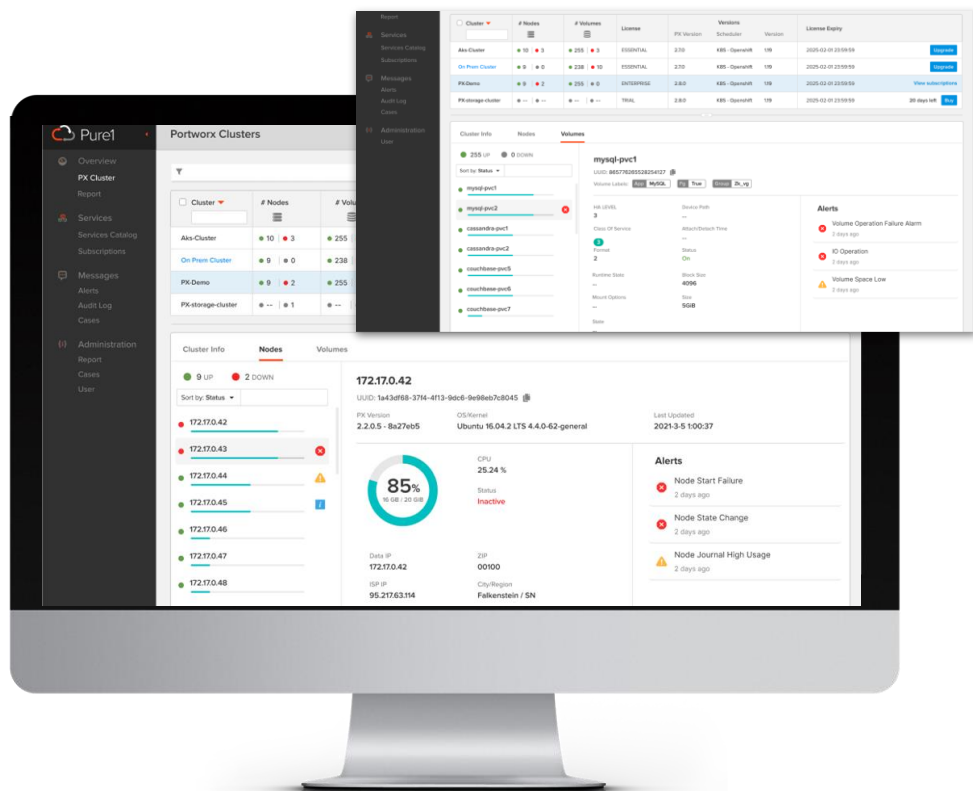
- Transparent pricing
- Annual discounts

Container & App Observability

Portworx telemetry data consumed by Pure1® AI

Provides basis for proactive support

Container- and Kubernetes app-centric analytics





Bottlenecks to Breakthroughs:

The Best Experience

Simplicity | Predictive Support | Streamlined Planning





OPTIMIZE

Reduce the time you spend on management and take the guesswork out of support.

STREAMLINE

Improve the speed and accuracy of resource planning while enhancing user experiences.

EMPOWER

Build your hybrid cloud infrastructure your way and on-demand without the headaches of legacy purchasing



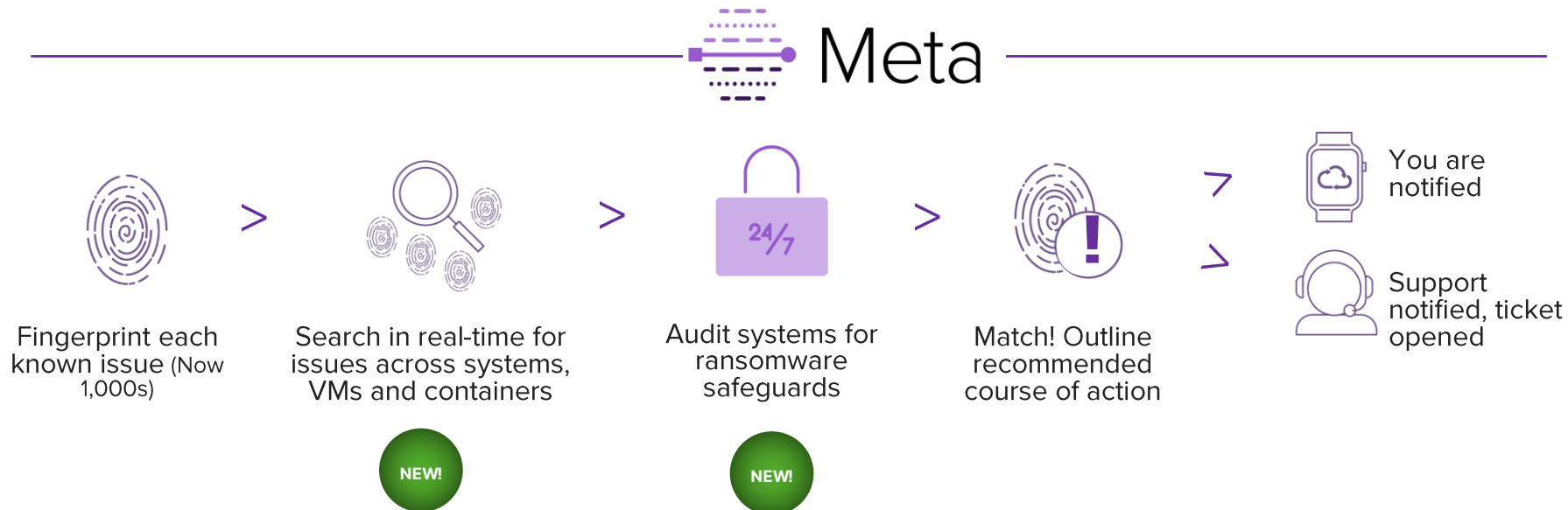


OPTIMIZE

Consolidated | Simple | Predictive | Global

Resolve Issues Before They Impact Users

Proactive Analysis, Alerting and Root Cause from Systems to Containers and More





STREAMLINE

What If Modeling | AI-Driven Workload Planning

Use 'What If' Modeling to Stay Ahead of Demands

Easily make decisions on how supporting business growth with data-driven predictions

- Forecasts based on up to 3 years of data
- Considers performance, latency and capacity
- Looks at entire fleet for possible rebalancing
- Recommends capacity expansion, controller upgrades and / or workload migration
- **VISION:** Ties to self-service quote & order

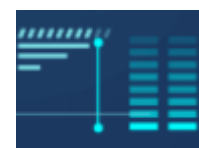
Fleet



IOPS



TB Growth



Trend Analysis & Forecasted Growth
Compared to 'Safe Zone' Resource Usage



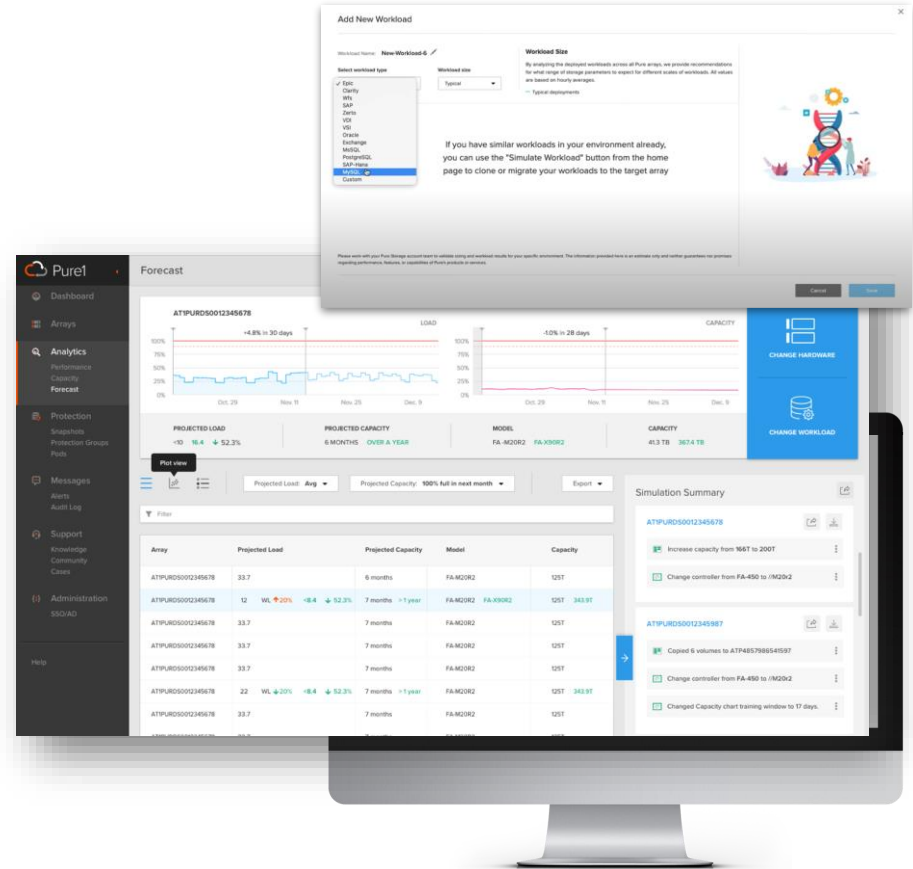
AI-Driven Recommendations

Adding Net New Workloads based on application aware profile & fleet intelligence

Workload Re-balancing Recommendations

Performance & Capacity Evergreen Recommendations

Pure as-a-Service Calculator for instance type selection





EMPOWER

Self Service | OpEx Growth Flexibility | Quote & Track

Modern, Marketplace Approach

NEW!

Plan & Buy On Your Schedule

Get Advice on What to Add

Make Hybrid Cloud Easy -
AWS Market Integration
Microsoft Azure Integration



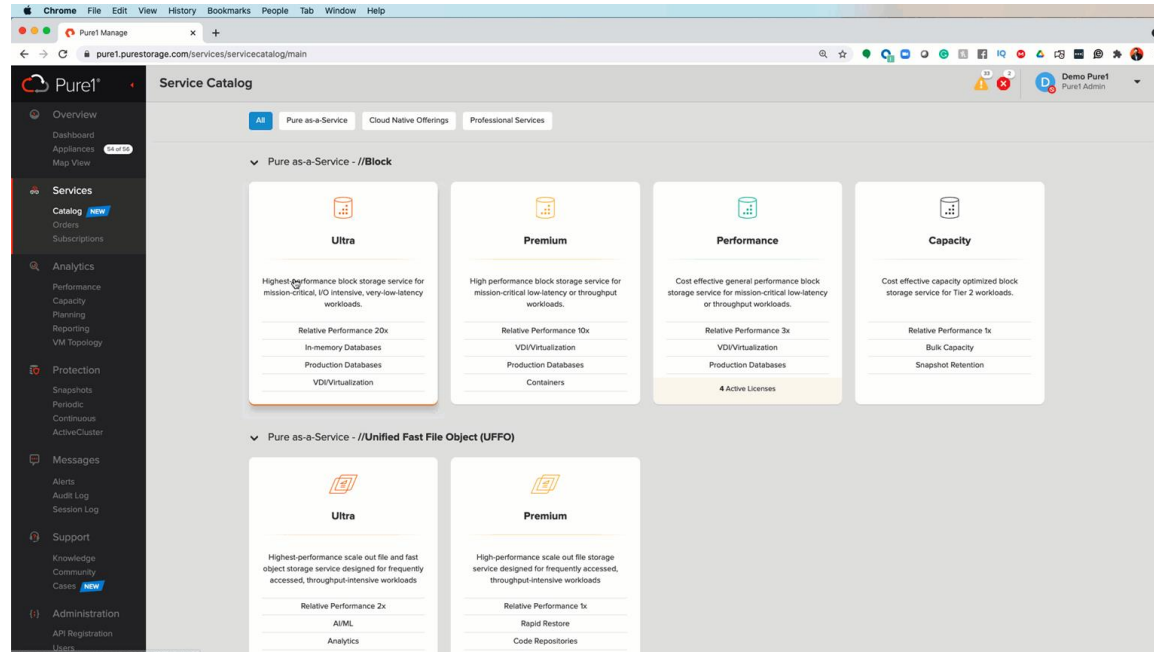
Expanded Digital Self Service

Expanded Offers - CBS AWS, CBS Azure, Pure as-a-Service, Portworx, and Professional Services

Subscription Management

Partner Personas for billing & order tracking

Customer Driven Upgrade Scheduling for Pure Upgrades



Expanded Digital Self Service

Empower: Flexible Control Growth

Scale On Demand

Define Terms Based on Needs

Add comments to make sure you get exactly what you need

Request for Quote [Close]

Pure as-a-Service //Block - Premium

Capacity: [Slider] 500 TIB Term: 12 Months Estimated Price (per month) \$48,128

Describe your use cases (optional):

[Text Area]

0/3000 characters

[Cancel] [Submit]



Thank You!

Contact us to continue the conversation

mc.kim@purestorage.com

공식 웹사이트
공식 유튜브
공식 페이스북
네이버 블로그

www.purestorage.com/kr

www.youtube.com/c/PureStoragekr

www.facebook.com/purestoragekorea

blog.naver.com/purestorage_korea

#PUREACCELERATE



